

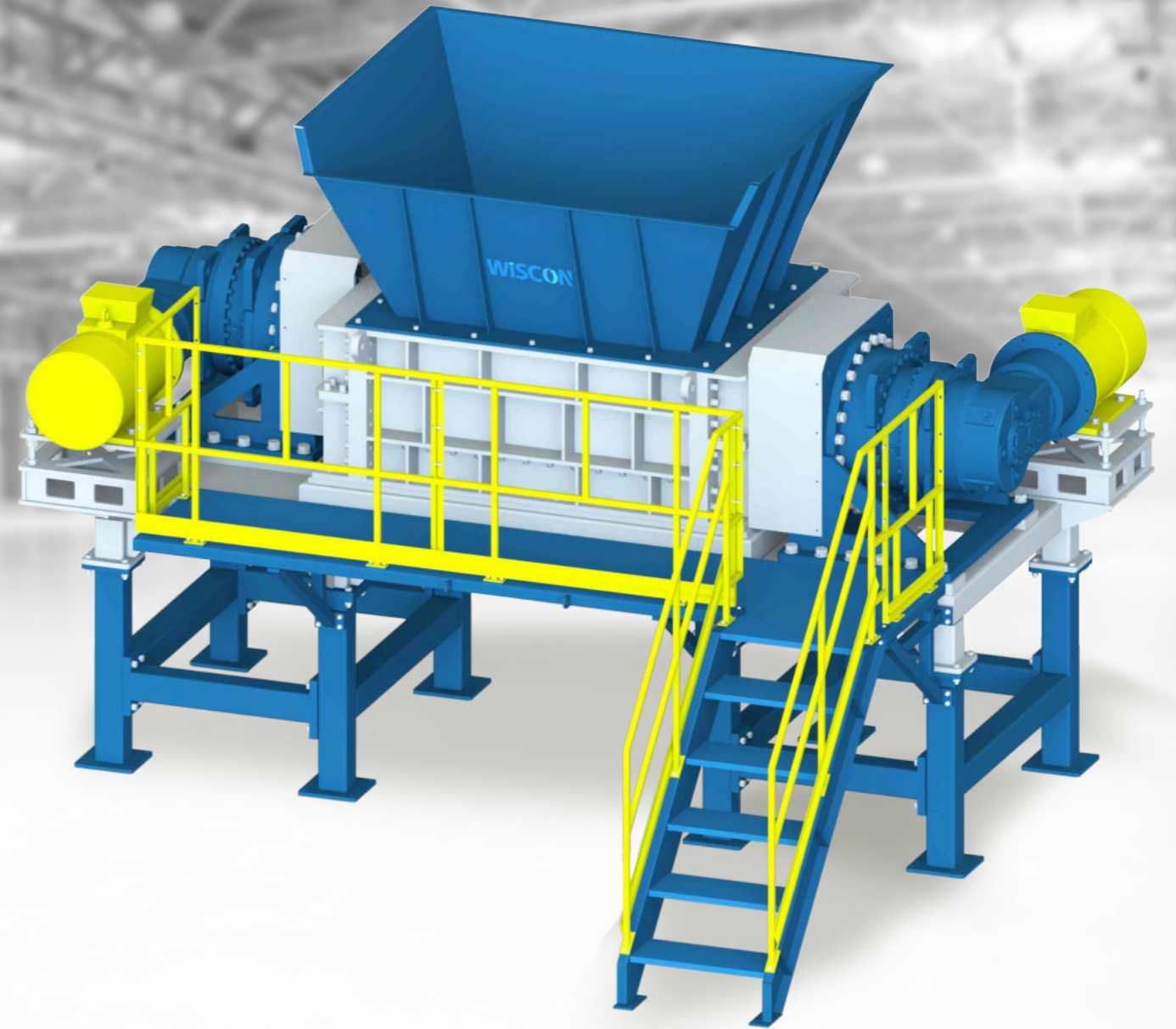
技术参数 | Specifications

项目 Item \ 型号 Model	DL4130	DL4150	DL5150	DL5180	DL6150	DL6180	DL6220
破碎室尺寸A×B (mm) Crushing chamber	1300×995	1500×995	1500×1150	1800×1150	1500×1450	1800×1450	2200×1450
刀辊直径 Rotor diameter (mm)	515	515	610	610	750	750	750
转速 Rotor speed (RPM)	8.3	8.3	7.5	7.5	6.3	6.3	6.3
刀片厚度 Blade thickness (mm)	50/75/100						
动刀数量 Rotor knife qty (pcs)	26/17/13	30/20/15	30/20/15	36/24/18	30/20/15	36/24/18	44/29/22
电机功率 Motor Power (kW)	30+30	37+37	45+45	55+55	75+75	90+90	110+110
外型尺寸 L×W×H Dimension (mm)	4590×2210× 2600	4890×2210× 2600	5150×2270× 2600	6340×2610× 4000	6993×3045× 4000	7110×3342× 4000	7986×3284× 3760
整机重量 Weight (kg)	9500	11000	24000	27700	27000	32000	38000

备注：1. 刀片厚度和刀体爪数可根据需要进行选配；Blade thickness and number of tooth can be selected as required.

2. 转速、功率可根据需要进行选配。Rotor speed and motor can be customized as required.

产品规格若有变更，恕不另行通知。We reserve the right to change specifications without prior notice.



大型双轴撕碎机

Double Shaft Shredder - DL Series

E-mail: wiscon@wiscon.com Tel: (86-20) 3113 3114

Web: www.wiscon.com 地址: 广州市番禺区大龙街沙涌村长沙路48号

Add: No.48, Changsha Road, Shachong Village, Panyu District, Guangzhou, China



威斯肯（广州）环保科技有限公司
Wiscon Envirotech Inc.

超大扭矩，万物皆可撕碎

Exceptionally High Torque to Smash It All

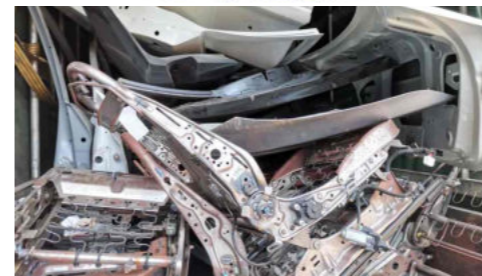
DL系列大型双轴撕碎机主要是针对较高破碎要求而设计。其亮点为稳固的机箱结构，更大容积的破碎箱和易于入料的进料斗，更高的输出扭矩，使其撕碎能力更强。设备广泛应用于撕碎高硬度、大体积、混合的物料，或成捆物料（可含有异物）。由于该设备不含筛网，常被用作废固物料的一级破碎，破碎颗粒的大小取决于刀片的厚度。

DL series large dual shaft shredders are designed for higher shredding requirements. DL equips with sturdy welded steel construction, increased size of crushing chamber, optimized feeding hopper, greater torque, realizing a **higher throughput**. This series is effectively processing tough and bulky materials and materials in bale (with slight foreign objects). Because shredder is screenless, it is often used as **primary shredding**, and the blade thickness determines shredded particle size.

应用范围 | Applications

- 垃圾衍生燃料：城市固体废物，工业垃圾，木材废料，工业废纸，轮胎，塑料，地毯，纺织品等；
- 金属材料：铝材，有色金属，无色金属，金属桶，废旧汽车等；
- 电子电器：电子废料，电子设备，废旧家电等；
- 塑料：塑料桶，大块塑料，薄膜等。
- RDF (Refuse-Derived-Fuel): MSW, industry waste, wood, paper, tires, plastics, carpet, textiles, etc.
- Metal materials: Aluminum, ferrous, non-ferrous, steel drums, waste automotive, etc.
- Electronics: WEEE, electronic equipment, waste household appliances, etc.
- Plastic: Drums, lumps, films, etc.

循环经济 | Circular Economy



成品和固废 Products and Wastes



撕碎块料 Shredded Particles

性能特点 | Features

- 刀体采用高合金42CrMo材料，强度高、韧性好、不易断裂。
- D型刀辊和DM型刀辊的刀片采用D2材质，刀体采用42CrMo。
- 主要的电气元件采用西门子和施耐德等国际品牌。
- 自动过载保护，具有反转功能，避免机器过载和卡死。
- 针对中空和大容积物料，可选配压料装置。
- Knife adopts high alloy steel 42CrMo with high strength and toughness.
- Blade of D-rotor and DM rotor adopts D2 steel, and knife adopts 42CrMo steel.
- Main electrical components are trusted brands such as Siemens and Schneider.
- Auto-reverse system re-orientates rotor direction when motor overload & material jam.
- Pusher Ram is optional for hollow and gigantic materials.

